



# O'DEA FIGHTING IRISH

2016 FOOTBALL MEDIA GUIDE





# MONDO & SONS

FAMILY OWNED AND OPERATED SINCE 1932

## MONDO & SONS INC AND THE BANCHERO FAMILY

**SUPPORTING O'DEA HIGH SCHOOL  
FOR 3 GENERATIONS.**

JERRY BANCHERO CLASS OF 1955  
LEW BANCHERO CLASS OF 1961  
DAVID BANCHERO CLASS OF 1963  
AARON BANCHERO CLASS OF 1989  
ANGELO BANCHERO CLASS OF 1990  
MARIO BANCHERO CLASS OF 1992  
ANTHONY BANCHERO CLASS OF 1995  
EVAN BANCHERO CLASS OF 2013



[WWW.MONDOANDSONS.COM](http://WWW.MONDOANDSONS.COM)





# watchfair



- See hundreds of watches, including the latest introductions and special editions from the world's finest watchmakers.
- Meet representatives who will be present to show collections and answer your questions.
- Unmatched trade-in and upgrade opportunities.

TWO DAY EVENT  
**NOVEMBER 13<sup>TH</sup>-14<sup>TH</sup>**

ALVIN GOLDFARB  
— JEWELER —

305 Bellevue Way NE | Bellevue, WA 98004  
(425) 454-9393  
[www.alvingoldfarbjeweler.com](http://www.alvingoldfarbjeweler.com)



# WALL OF HONOR

## INDUCTEE CELEBRATION

**October 20, 2016 • O'Dea Gym • 6pm**

Since 1998, O'Dea Athletics has recognized the outstanding achievements of O'Dea athletes, coaches, administrators and others who best exhibit the pursuit of excellence with integrity and have contributed to the proud athletic traditions of O'Dea High School. This year, for the first time, we are dedicating an evening to all inductees of the past, specifically the first ever inductees from 1998, while also welcoming the 2016 inductees into O'Dea's esteemed Wall of Honor. We hope you will join us!

To purchase tickets or inquire about sponsorship opportunities, please visit [odea.org/athletics/wall-of-honor](http://odea.org/athletics/wall-of-honor)

talkspace

THERAPY  
FOR HOW WE  
LIVE TODAY



THE TALKSPACE COUNSELOR NETWORK IS COMPRISED OF OVER 300 LICENSED, PROFESSIONAL COUNSELORS, WHO ARE WAITING AND AVAILABLE TO HELP YOU. WHETHER YOU ARE FACING A BREAKUP, DIVORCE, OR ARE SUFFERING FROM MORE SERIOUS DEPRESSION, ANXIETY, SOCIAL DISORDER OR OTHER, THERE IS A SPECIALIZED TALKSPACE COUNSELOR AVAILABLE TO HELP YOU.

Online therapy with a licensed counselor



WWW.TALKSPACE.COM  
ONLINE COUNSELING  
ON-DEMAND • ANYTIME • ANYPLACE



# WELCOME

Welcome Fighting Irish Football Fans! We are excited about the 2016 football season and are grateful for your continued support of our exceptional student-athletes. These dedicated young men, their families, and our coaches are committed to honoring and advancing O'Dea's proud tradition of excellence and winning with honor. I have every confidence that together we will realize this most worthy of purposes.

Led by head coach, Monte Kohler, the 2016 football team has set lofty goals for the season. The squad's objectives are grounded in hard work, commitment, discipline, and sportsmanship. The newly launched Little Irish Program is a wonderful example of the football program's dedication to advancing our mission. By matching an O'Dea football player with a student in grades K-6th, the program promotes responsibility in our student-athletes as positive role models for the entire O'Dea community. I encourage you to sign up your child and enjoy the many benefits of membership in the Little Irish Program.

Together our student-athletes, their families, and our coaches do an outstanding job representing O'Dea and our mission of preparing young men to live lives grounded in character, faith, and service. Please respect the efforts and competitive spirit of our young men by modeling good sportsmanship and proper décor-um at all our games and events. Thank you for the role you play in supporting our student-athletes. Go Irish!

*Jim Walker*  
Principal



## O'DEA

2016 OFFICIAL MEDIA GUIDE

**PRODUCED BY:**  
GAMEDAY MEDIA

**PHOTOGRAPHY BY:**  
NW SPORTS PHOTOGRAPHY  
O'DEA STUDENT PHOTOGRAPHERS  
NAKEAN WICKLIFF

FOR SPONSORSHIP INFO PLEASE  
CONTACT GAMEDAY MEDIA AT  
503.214.4424 OR ONLINE AT  
[GoGAMEDAYMEDIA.COM](http://GoGAMEDAYMEDIA.COM)



O'DEA HIGH SCHOOL AND GAMEDAY  
MEDIA WOULD LIKE TO THANK AND  
ACKNOWLEDGE ALL OF THE SPONSORS  
IN THIS MEDIA GUIDE. PLEASE  
SUPPORT THESE BUSINESSES THAT  
SUPPORT YOUR KIDS.

COPYRIGHT © 2016

PRINTED ON POST CONSUMER PAPER



Enhancing Neighborhood Trees & Landscapes Since 1880.

WA Lic# DAVEY TE95210

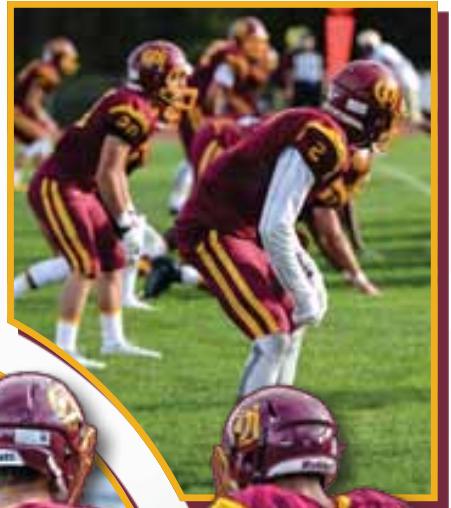
**DAVEY**   
Proven Solutions for a Growing World

· Tree and Shrub Pruning · Deep-Root Fertilization · Removal  
· Insect & Disease Management · Cabling · Lawn Care Programs  
· Residential/Commercial · Certified Arborists · Free Consultations

Greater Seattle 425-462-8829

[www.davey.com](http://www.davey.com)  
THE DAVEY TREE EXPERT COMPANY













**O'DEA**  
HIGH SCHOOL  
— EST. 1923 —

### **OUR MISSION**

O'Dea is a Catholic high school whose mission is to educate young men and prepare them to be men of character, faith, and service.

### **OUR PHILOSOPHY**

O'Dea High School provides young men with a Catholic, college-preparatory education. In the spirit and tradition of the Essential Elements of an Edmund Rice Christian Brother Education, O'Dea's diverse, single-gender learning environment lays a rich foundation for the academic and social development of our students.





## THE O'DEA EXPERIENCE

### *Catholic education -*

O'Dea High School is committed to developing our students into young men of character, faith, and service. Theology coursework, liturgies, retreats, community service, campus ministry, and character development are integral components of O'Dea's faith-filled education.

### *College Preparatory Academics -*

O'Dea High School is the only all-male Catholic college-preparatory high school in the Pacific Northwest. As a Gurian Model School, our faculty employs an approach to teaching tailored specifically to boys' learning styles. Through Advanced Placement, Honors, College in the High School, and college-prep courses, O'Dea prepares each student to succeed at a post-secondary institution of their choice.

### *Diversity -*

Diversity has been a signature strength of O'Dea's student body since the school was founded in 1923. Our student body reflects the cultural, ethnic, and socio-economic diversity that exists in the greater Seattle region. This diversity is a fundamental part of our community.

### *Brotherhood -*

The O'Dea experience fosters unparalleled bonds of brotherhood among students. Our unique, all-male student body enriches these bonds through shared experiences, including participation in the House System, a program dedicated to developing leadership skills and connecting students with each other, their school, and the community. These bonds last well beyond graduation, spanning decades, lifetimes, and generations.

### *Tradition of winning, with honor -*

Athletic success is a longstanding tradition at O'Dea. With this tradition comes the responsibility to compete, with honor. Success is achieved with hard work and discipline, and is celebrated with sportsmanship and a selfless focus on the team. O'Dea athletes constantly strive to represent the school and community with pride and dignity.

### *Urban Campus -*

O'Dea's urban campus elevates the traditional high school experience through our location in a vibrant intersection of city life. O'Dea is located across the street from St. James Cathedral, between premiere medical facilities, art museums, and college campuses. Our students are exposed to stimulating inner-city experiences that enrich their education.





## PROGRAM FOR BOYS AND GIRLS

### 2016 LITTLE IRISH PROGRAM PARTICIPATION BENEFITS

The **Little Irish** \$30.00 membership fee includes:

- O'Dea **Little Irish** Jersey
- O'Dea **Little Irish** ID Card
- O'Dea Football
- Free admission, for mentee, to all home football games
- Field visits after each home game
- Participation in O'Dea football practices
- Participation in events during the football season
- Individual activities with their O'Dea mentor

#### QUESTIONS

Please contact:

Joe Cronin, Assistant Football Coach and Program Coordinator  
206-622-6596 or [jcronin@odea.org](mailto:jcronin@odea.org)

Gabi Botello, Assistant Athletic Director  
206-622-6596 or [gbotello@odea.org](mailto:gbotello@odea.org)





# OPEN HOUSE

**FALL OPEN HOUSE**  
NOVEMBER 3, 2016, 6-9PM

**WINTER OPEN HOUSE**  
JANUARY 5, 2017, 6-8PM

**SCHEDULE A SHADOW DAY**  
ODEA.ORG

**CLASS OF 2021 PLACEMENT EXAM**  
DECEMBER 3, 2016 OR DECEMBER 10, 2016

**CONTACT**  
KRISTIAN PATTERSON, DIRECTOR OF ADMISSIONS  
(206) 622-1308 • KPATTERSON@ODEA.ORG

*"Your Mortgage Solution"*

West Seattle Mortgage Inc. is an independent mortgage broker committed to finding the right loan products for your needs. We provide Washington mortgages, Seattle loans and mortgages, and low mortgage rates in Seattle and all of Washington State.

With over 22 year of experience, Rob McAllister is your local, independent mortgage specialist. With our knowledge and versatility, we can find the loan products for just about anyone, and provide different loan products to meet our client's unique needs, including purchase loans, VA and FHA loans, refinance loans, and more. Our success has been built on our integrity.

West Seattle Mortgage is committed to giving you fast, top-quality service. We're also here to help you understand your mortgage options so you feel confident and informed during your buying or refinancing process. West Seattle Mortgage Inc. is a small, local, mortgage company where you can count on sound advice and a loan product you can feel comfortable with for the time you plan to own your home.



**Rob McAllister**  
Mortgage Broker

West Seattle Mortgage, Inc.  
5400 California Ave SW, Suite B  
Seattle, Washington 98136  
Phone: (206) 935-1625  
[rob@westseattlemortgage.net](mailto:rob@westseattlemortgage.net)

[www.WestSeattleMortgage.com](http://www.WestSeattleMortgage.com)



# 13 VARSITY SCHEDULE

2016 O'DEA FOOTBALL

DATE	DAY	OPPONENT	LOCATION	TIME
SEPT. 2	FRIDAY	LINCOLN HS	WEST SEATTLE STADIUM	7:00 PM
SEPT.9	FRIDAY	SHELTON HS	MEMORIAL STADIUM	7:30 PM
SEPT. 16	FRIDAY	SKYVIEW HS	KIGGINS BOWL- VANCOUVER WA	5:00 PM
SEPT. 23	FRIDAY	BLANCHET HS	WEST SEATTLE STADIUM	7:00 PM
SEPT. 30	FRIDAY	SEATTLE PREP HS	WEST SEATTLE STADIUM (VISITORS)	7:00 PM
OCT. 7	FRIDAY	BAINBRIDGE HS	BAINBRIDGE	7:00 PM
OCT. 14	FRIDAY	EASTSIDE HS	WEST SEATTLE STADIUM	7:00 PM
OCT. 21	FRIDAY	LAKESIDE HS	WEST SEATTLE STADIUM (SENIOR NIGHT & HOMECOMING)	7:00 PM
OCT. 27, 28, 29	THUR-SAT	METRO PLAYOFFS	MEMORIAL STADIUM	TBD
NOV. 4 & 5	FR/SAT	DISTRICT PLAYOFFS	TBD	TBD

## See Us Now! We Make it easy.

View our new and pre-owned cars at  
[www.uvwaudi.com](http://www.uvwaudi.com)

### Great Selection & Savings

Special value lease and financing programs expire soon!

Offering VW & Audi Parts and Service and Quality Used Cars

Selection - Value - Service | Commitment to Pure VW/Audi Passion | No Pressure - No Games



**Audi**



**UNIVERSITY**



47th & Roosevelt in Seattle's U-District | [www.uvwaudi.com](http://www.uvwaudi.com) | 206-634-3322

Visit our great pre-owned vehicles at University Audi Lynnwood, 17315 Hwy 99, Lynnwood 425-743-7400

# SCHEDULES

2016 O'DEA FIGHTING IRISH

## JUNIOR VARSITY SCHEDULE

DATE	DAY	OPPONENT	LOCATION	TIME
SEPT. 12	MONDAY	NEWPORT HS	NEWPORT HS	6:00 PM
SEPT. 19	MONDAY	RAINIER BEACH	SE ATHLETIC COMPLEX	4:30 PM
SEPT. 26	MONDAY	BLANCHET HS	BLANCHET HS	5:00 PM
OCT. 3	MONDAY	SEATTLE PREP HS	SOUNDVIEW	3:30 PM
OCT. 10	MONDAY	BAINBRIDGE HS	SOUNDVIEW	3:30 PM
OCT. 17	MONDAY	EASTSIDE HS	EASTSIDE HS	7:00 PM
OCT. 24	MONDAY	TBD	TBD	TBD

## FRESHMAN SCHEDULE

DATE	DAY	OPPONENT	LOCATION	TIME
SEPT. 10	SATURDAY	BALLARD HS	TBD	TBD
SEPT. 17	SATURDAY	NATHAN HALE HS	TBD	TBD
SEPT. 24	SATURDAY	BLANCHET HS	BLANCHET HS	10:00 AM
OCT. 1	SATURDAY	TBA	TBA	TBA
OCT. 8	SATURDAY	SEATTLE PREP HS	TBA	TBA
OCT. 15	SATURDAY	GARFIELD HS	GARFIELD HS	2:30 PM
OCT. 22	SATURDAY	ROOSEVELT	SOUNDVIEW	10:00 AM
OCT. 29	SATURDAY	WEST SEATTLE	TBD	TBD
NOV. 5	SATURDAY	EASTSIDE	TBD	TBD

FOR UPDATED SCHEDULE INFORMATION PLEASE VISIT [ODEA.ORG/ATHLETICS/FALL-SPORTS/FOOTBALL/](http://ODEA.ORG/ATHLETICS/FALL-SPORTS/FOOTBALL/)





**RAM-JACK®**

FOUNDATION EXPERTS

- // Lifetime Warranty
- // #1 Customer Service
- // Highest Rated Product



Call Us Today for your FREE Foundation Evaluation!

**541-833-9101**

[ramjackwest.com](http://ramjackwest.com)



# 2016 O'DEA SEASON PREVIEW

Welcome Fighting Irish Fans!

I would like to welcome you all to another exciting season of Irish Football. We have had a great offseason. Our new strength and conditioning coach, Paxton Paynter, has been a wonderful addition to our school. The young men that participated in the summer program have made tremendous gains. I am so proud of their hard work and dedication and am excited to see their leadership in action.

We have a talented and committed group of coaches that our fans should be very excited about. Not only do our coaches have a lot of experience, we have a number of young, enthusiastic coaches, making this arguably the best staff in the state of Washington. We will continue to develop these young men into leaders and challenge them to be the best they can be on and off the field. The future of our program looks bright; we are excited to take it to a new level.

At O'Dea High School, athletic success is a long-standing tradition. That success is achieved with hard work and discipline, and is celebrated with sportsmanship and a selfless focus on the team. We constantly strive to represent our school, and our community, with pride and dignity. The young men of O'Dea continue to amaze me and, like you, we are extremely proud of them.

I am excited about the 2016 football season but I am even more excited about the 2016-17 school year. O'Dea is a school with a rich tradition of winning, with honor, and I look forward to sharing with you our continued athletic successes for years to come. Thank you for your support; we simply wouldn't be where we are without you.

Live Jesus in our hearts, forever!

Go Irish!

*Coach Kohler*

Athletic Director

Head Football Coach



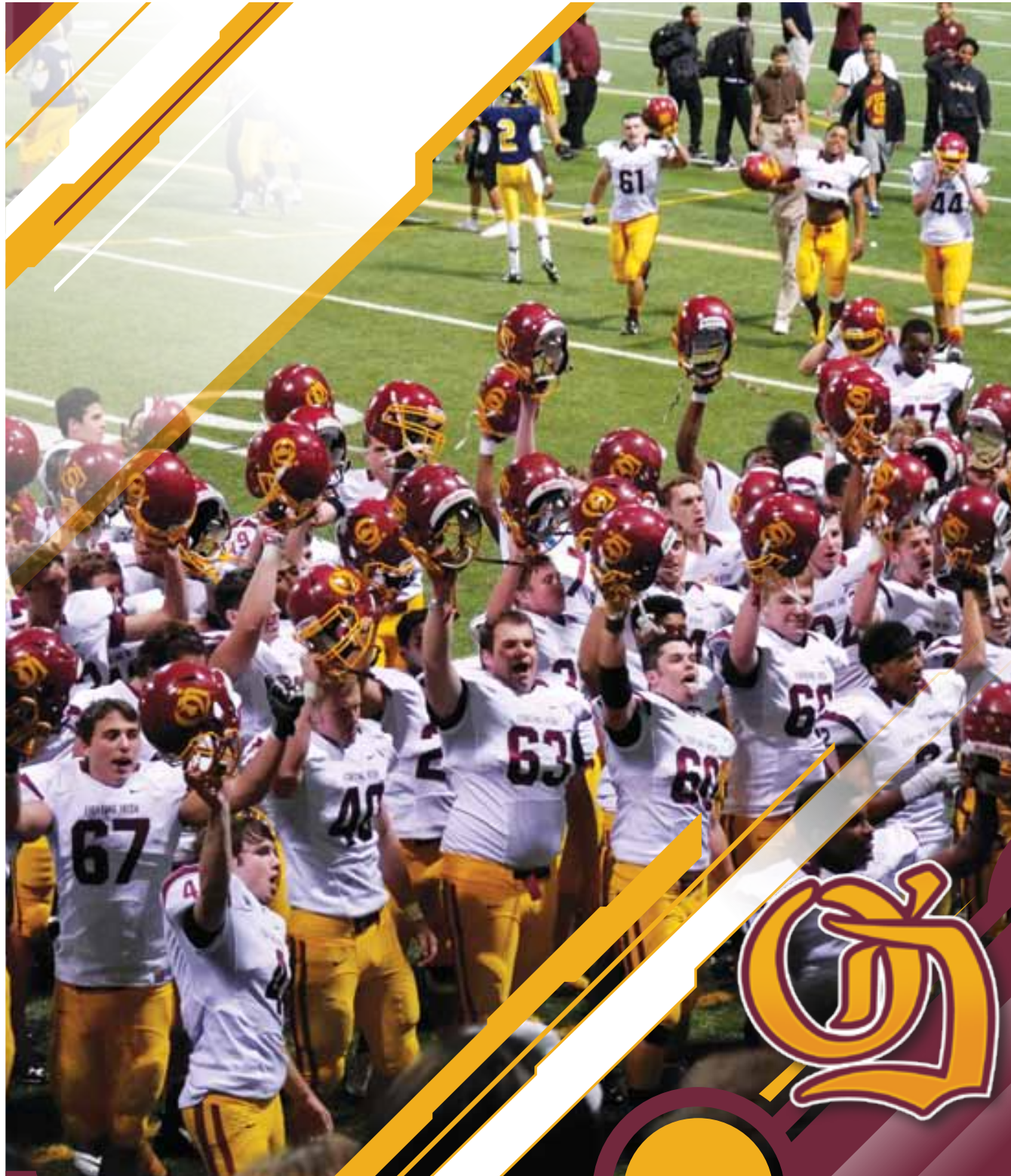
Fusion Math is a college style study center specializing in Math & Science. We offer One-to-One Tutoring & Test Prep by appointment, as well as Drop-In hours and SAT Classes.

206-729-MATH

[fusionmath.com](http://fusionmath.com)

Seattle: *U Village Area*  
Bellevue: *Old Town*





# GAMEDAY MEDIA

[WWW.GOGAMEDAYMEDIA.COM](http://WWW.GOGAMEDAYMEDIA.COM)

OVER \$5 MILLION DONATED TO HIGH SCHOOL SPORTS PROGRAMS  
SHOW YOUR SUPPORT • BECOME A SPONSOR • CALL 503.214.4424



**BRUCE  
COMPANY**

**GO IRISH!**



# VARSITY ROSTER

19

2016 O'DEA FOOTBALL

#	NAME	YEAR	HEIGHT	WEIGHT	POSITION
2	QUINTON LEWIS	12	6'0	160	WR/DB
3	J. P. MORIARTY	11	5'8	155	WR/DB
4	STEPHEN POWELL	11	5'8	142	K
5	JAMYN PATU	11	5'10	193	RB/DB
6	MISHAEL POWELL	10	5'10	155	WR/DB
7	EMONTE SCOTT	10	5'11	150	QB/DB
8	ANDREW WALKER	11	6'2	199	WR/H
9	MARK TAFIA	10	5'8	188	RB/DB
10	JACK ANDERSON	10	5'7	141	QB/DB
11	VICTOR FELDER	10	6'1	184	TE/DB
12	BEN BEALE	12	6'0	158	QB/LB
13	THOMAS SHORACK	11	5'10	159	WR/DB
14	CYRUS HUNTER	10	5'7	145	WR/DB
15	CAMERON MIKAMI	12	5'11	162	WR/DB
16	VLAD BUCHHEIT	10	5'9	169	RB/LB
17	JASON WONG	12	5'8	162	WR/DB
18	ZACH WRIGHT	10	6'0	169	QB/DE
19	LUCAS KRAMER	10	5'11	142	QB/DB
20	CONNOR GREGOIRE	11	5'8	184	RB/DB
21	SHEA CARSTENS	12	5'8	165	RB/DB
22	MICHAEL ULUGALU	10	5'8	192	RB/DB
23	DAKOTA CRUZ	12	5'11	183	WR/DB
24	FREDRICK COOPER	12	6'0	190	RB/LB
25	HUNTER FRANCO	12	5'10	205	RB/LB
26	TRISTAN KICHLINE	10	5'10	155	K
27	PARKER D'ANNA	11	5'11	186	RB/DB
28	DOMINIQUE GATES	12	5'10	161	WR/DB
29	CYRUS FILOTEO	10	5'2	140	RB/DB
30	ISAIAH ARTIS	11	5'8	171	RB/LB
31	TREVOR TAYLOR	12	5'9	147	RB/DB
32	SAM SANCHEZ	12	6'3	197	TE/DE
33	LEWIS CAPERS	12	6'0	215	FB/LB
34	THAD VAN WINKLE II	11	5'8	170	RB/DB
35	JONATHAN GILBANE	10	5'7	140	RB/DB
36	ZACH LEE	10	5'11	162	WR/DB
37	THOMAS TABOR	10	5'10	141	WR/P
38	SEAN MAHONEY	10	5'11	145	WR/DB
39	BASIL DIZARD	10	5'9	188	FB/DL
40	MASON SCOTT	11	5'10	184	RB/LB
41	SEBASTIAN MILLER	10	5'10	148	WR/LB
42	KYLE HOLLABAUGH	12	6'0	212	RB/LB
43	THOMAS STOWERS	12	6'0	181	WR/DB
44	ANDRE DAVIS	10	5'11	142	WR/DB
45	GABE SCHUMER	10	5'9	175	RB/LB
46	MARCUTIO HAMAKER	12	5'10	165	RB/LB
47	SKYLER KLOTH	11	5'11	194	RB/LB
48	DENEZ HALEY	11	5'11	180	RB/LB
49	JACKSON MCDONALD	10	5'11	166	FB/LB
50	V. J. MALO	11	5'11	235	RB/DE
51	IRVIN BLANCO	10	5'8	201	OL/DL
52	JACK MARKOWITZ	11	6'0	204	OL/LB

# VARSITY ROSTER

2016 O'DEA FOOTBALL

#	NAME	YEAR	HEIGHT	WEIGHT	POSITION
53	NICK SUN	11	5'11	218	OL/DL
54	JACK GOLDBERG	12	6'0	198	OL/LB
55	GRIFFIN KORICAN	11	6'5	286	OL/DL
56	JARED BAKKEN	11	6'0	231	OL/DL
57	ROBERTO PROANO	12	5'11	215	K
58	MICAH DAVIS	11	6'0	215	OL/DL
59	SEBASTIAN ARISMENDI	12	6'2	235	OL/P
61	NICK SCHMITT	11	5'10	232	OL/DL
62	DAVID JONES	11	5'8	192	OL/DL
63	MILES KRAUTER	11	6'0	185	OL/DL
64	CALEB TESHOME	10	5'10	304	OL/DL
65	EDWARD CHAVEZ	10	5'11	216	OL/DL
66	DOUG RUSSELL	12	6'4	290	OL/DL
67	CONNER DASSA-HOLLAND	10	6'1	210	OL/DL
68	TONY FLOR	12	6'2	206	OL/DL
69	TAYLOR KOVACICH	10	6'0	192	OL/DL
70	SONAT TAYDAS	10	6'1	227	OL/DL
71	NOLAN VALICIK	11	6'2	178	OL/DL
72	DUGAN MORAN	10	6'0	250	OL/DL
73	MARTIN MACEDO	10	6'0	188	OL/DL
74	WILL MALLOY	11	6'1	232	OL/DL
75	NATHANIEL GROSE	11	6'1	183	OL/DL
76	DAVION DIXON	11	6'1	318	OL/DL
77	WARREN KING	12	6'4	224	QB/DE
78	PRESTON HELWEGE	10	6'6	227	OL/DL
79	CADEN STEELE	11	5'7	183	OL/LB
80	WAYNE JOHNSON	11	5'11	189	TE/DE
81	JACK PAULY	10	5'7	142	WR/DB
82	HANK PRZELENSKI	10	5'6	95	K
83	MAKAI SANTOS-MAGEE	11	5'9	138	WR/DB
84	GRANT STADING	10	5'10	153	WR/DB
85	JACK WESTOVER	11	6'4	213	WR/DB
86	MONTINEZE JOHNSON	12	5'11	164	WR/DB
87	SPENCER MCCABE	12	6'4	230	TE/DE
88	MILES TALIAFERRO	11	6'1	183	WR/DB
89	PETER GOCKOWSKI	11	5'8	141	WR/DB
	GAVIN DOERR	10	6'1	171	TE/DE

**"OFFICIAL PHOTOGRAPHER OF THE OSAA"**

Athletic • Bands • Choirs • Events • Dance • Cheer • Clubs

**NSP**

**NORTHWEST  
SPORTS  
PHOTOGRAPHY**

1-800-446-5758

Serving the Northwest Since 1976!

[WWW.4NSP.COM](http://WWW.4NSP.COM)

Find us on  
Facebook

Follow us on  
twitter





*Selling the Coastal Suburbs*

Blue Ridge  
Innis Arden  
Richmond Beach  
and Woodway

**206-498-2189**

**Jack Malek, Realtor**

**[jmalek@windermere.com](mailto:jmalek@windermere.com)**



  
**Windermere**  
REAL ESTATE



**VARSITY & JV**



**SENIORS**

**North Seattle**  
**ORTHODONTICS**

*creating smiles you love to share*





## CAPTAINS

**Dr. Elizabeth Lyons**

Invisalign & Braces for Children, Teens & Adults

**206-523-1047**

[www.northseattleortho.com](http://www.northseattleortho.com)

11011 Meridian Ave N. | Suite #304



*Complimentary Exam for O'Dea High School Families*

# VARSITY SENIORS

2016 O'DEA FOOTBALL



2

QUINTON **LEWIS**

12 6'0 160 WR/DB



12

BEN **BEALE**

12 6'0 158 QB/LB



15

CAMERON **MIKAMI**

12 5'11 162 WR/DB



17

JASON **WONG**

12 5'8 162 WR/DB



21

SHEA **CARSTENS**

12 5'8 165 RB/DB



23

DAKOTA **CRUZ**

12 5'11 183 WR/DB



24

FREDRICK **COOPER**

12 6'0 190 RB/LB



25

HUNTER **FRANCO**

12 5'10 205 RB/LB



28

DOMINIQUE **GATES**

12 5'10 161 WR/DB



31

TREVOR **TAYLOR**

12 5'9 147 RB/DB



32

SAM **SANCHEZ**

12 6'3 197 TE/DE



33

LEWIS **CAPERS**

12 6'0 215 FB/LB



# VARSITY SENIORS

2016 O'DEA FOOTBALL



**KYLE HOLLABAUGH**

12 6'0 212 RB/LB



**THOMAS STOWERS**

12 6'0 181 WR/DB



**MARCUTIO HAMAKER**

12 5'10 165 RB/LB

©2015 Delta Faucet Company

This is the moment your forearm  
has been waiting for.

TOUCHO® TECHNOLOGY. TOUCH IT ON, TOUCH IT OFF.

Touch anywhere on the spout or handle with your wrist or forearm to start  
and stop the flow of water. Another way that Delta® is more than just a faucet.  
For more information, visit [deltafaucet.com/touchkitchen](http://deltafaucet.com/touchkitchen)



# VARSITY SENIORS

2016 O'DEA FOOTBALL



**JACK GOLDBERG**

12 6'0 198 OL/LB



**ROBERTO PROANO**

12 5'11 215 K



**SEBASTIAN ARISMENDI**

12 6'2 235 OL/P



**DOUG RUSSELL**

12 6'4 290 OL/DL



**TONY FLOR**

12 6'2 206 OL/DL



**WARREN KING**

12 6'4 224 QB/DE



**MONTINEZE JOHNSON**

12 5'11 164 WR/DB



**SPENCER MCCABE**

12 6'4 230 TE/DE







**ELISE BUIE FAMILY LAW**

*Your family's future is our first priority*



## Passionate | Creative | Problem Solvers

- Divorce 101
- Divorce Mediation
- Collaborative Divorce
- Domestic Violence
- Fathers
- Parenting Plans
- Relocation
- Communication Coaching
- Children and Divorce
- Child Support
- Guardian Ad Litem Services
- Parenting Plan Modification
- Never Married Couples/Parents
- Step-Family Dynamics
- Co-Habitation Agreements
- Pre-Nuptial Agreements
- Post-Nuptial Agreements
- Property Division
- Same Sex Marriage
- Spousal Maintenance

# Elise Buie

Attorney  
Guardian ad Litem

Direct line: 206-389-1623  
Main: 206-926-9848

[www.elisebuiefamilylaw.com](http://www.elisebuiefamilylaw.com)  
[eliseb@elisebuiefamilylaw.com](mailto:eliseb@elisebuiefamilylaw.com)

1001 Fourth Ave. 44th Floor  
Seattle, WA 98154



# VARSITY UNDERCLASSMEN

2016 O'DEA FOOTBALL



J.P. **MORIARTY**

11 5'8 155 WR/DB



STEPHEN **POWELL**

11 5'8 142 K



JAMYN **PATU**

11 5'10 193 RB/DB



MISHAEL **POWELL**

10 5'10 155 WR/DB



EMONTE **SCOTT**

10 5'11 150 QB/DB



ANDREW **WALKER**

11 6'2 199 WR/H



MARK **TAFIA**

10 5'8 188 RB/DB



JACK **ANDERSON**

10 5'7 141 QB/DB



VICTOR **FELDER**

10 6'1 184 TE/DB



THOMAS **SHORACK**

11 5'10 159 WR/DB



CYRUS **HUNTER**

10 5'7 145 WR/DB



VLAD **BUCHHEIT**

10 5'9 169 RB/LB



ZACH **WRIGHT**

10 6'0 169 QB/DE



LUCAS **KRAMER**

10 5'11 142 QB/DB



CONNOR **GREGOIRE**

11 5'8 184 RB/DB



MICHAEL **ULUGALU**

10 5'8 192 RB/DB



TRISTAN **KICHLINE**

10 5'10 155 K



PARKER **D'ANNA**

11 5'11 186 RB/DB



CYRUS **FILOTEO**

10 5'2 140 RB/DB




ISAIAH **ARTIS**

11 5'8 171 RB/LB



# VARSITY UNDERCLASSMEN

2016 O'DEA FOOTBALL




**34**  
**THAD VAN WINKLE II**  
11 5'8 170 RB/DB



**35**  
**JONATHAN GILBANE**  
10 5'7 140 RB/DB



**36**  
**ZACH LEE**  
10 5'11 162 WR/DB



**37**  
**THOMAS TABOR**  
10 5'10 141 WR/P



**38**  
**SEAN MAHONEY**  
10 5'11 145 WR/DB




**39**  
**BASIL DIZARD**  
10 5'9 188 FB/DL



**40**  
**MASON SCOTT**  
11 5'10 184 RB/LB



**41**  
**SEBASTIAN MILLER**  
10 5'10 148 WR/LB




**44**  
**ANDRE DAVIS**  
10 5'11 142 WR/DB



**45**  
**GABE SCHUMER**  
10 5'9 175 RB/LB



**47**  
**SKYLER KLOTH**  
11 5'11 194 RB/LB



**48**  
**DENEZ HALEY**  
11 5'11 180 RB/LB



**49**  
**JACKSON MCDONALD**  
10 5'11 166 FB/LB



**50**  
**V.J. MALO**  
11 5'11 235 RB/DE



**51**  
**IRVIN BLANCO**  
10 5'8 201 OL/DL



**52**  
**JACK MARKOWITZ**  
11 6'0 204 OL/LB



**53**  
**NICK SUN**  
11 5'11 218 OL/DL



**55**  
**GRIFFIN KORICAN**  
11 6'5 286 OL/DL



**56**  
**JARED BAKKEN**  
11 6'0 231 OL/DL



**58**  
**MICAH DAVIS**  
11 6'0 215 OL/DL

# VARSITY UNDERCLASSMEN

2016 O'DEA FOOTBALL



61

NICK **SCHMITT**

11 5'10 232 OL/DL



62

DAVID **JONES**

11 5'8 192 OL/DL



63

MILES **KRAUTER**

11 6'0 185 OL/DL



64

CALEB **TESHOME**

10 5'10 304 OL/DL



65

EDWARD **CHAVEZ**

10 5'11 216 OL/DL



67

C. **DASSA-HOLLAND**

10 6'1 210 OL/DL



69

TAYLOR **KOVACICH**

10 6'0 192 OL/DL



70

SONAT **TAYDAS**

10 6'1 227 OL/DL



71

NOLAN **VALICIK**

11 6'2 178 OL/DL



72

DUGAN **MORAN**

10 6'0 250 OL/DL



73

MARTIN **MACEDO**

10 6'0 188 OL/DL



74

WILL **MALLOY**

11 6'1 232 OL/DL



75

NATHANIEL **GROSE**

11 6'1 183 OL/DL



76

DAVION **DIXON**

11 6'1 318 OL/DL



78

PRESTON **HELWEGE**

10 6'6 227 OL/DL



79

CADAN **STEELE**

11 5'7 183 OL/LB



80

WAYNE **JOHNSON**

11 5'11 189 TE/DE



81

JACK **PAULY**

10 5'7 142 WR/DB



82

HANK **PRZELENSKI**

10 5'6 95 K



83

MAKAI **SANTOS-MAGEE**

11 5'9 138 WR/DB



# VARSITY UNDERCLASSMEN

2016 O'DEA FOOTBALL



**GRANT STADING**  
10 5'10 153 WR/DB



**JACK WESTOVER**  
11 6'4 213 WR/DB



**MILES TALIAFERRO**  
11 6'1 183 WR/DB



**PETER GOCKOWSKI**  
11 5'8 141 WR/DB



## HydroCon

### Environmental Consulting

HydroCon provides quality environmental consulting services on projects ranging from as small as the home owner to as large as industrial facilities. By developing an innovative and efficient project strategy, we can achieve project success in a timely manner. We bring our clients an exceptional level of service based on a combined 100 years of experience and a goal of creating a sustainable future.

- PHASE I & II ENVIRONMENTAL SITE ASSESSMENTS
- REGULATORY COMPLIANCE
- UST DECOMMISSIONING
- ENVIRONMENTAL CONSTRUCTION MANAGEMENT
- REMEDIAL INVESTIGATION & FEASIBILITY STUDIES
- ENVIRONMENTAL INFORMATION DATABASE MANAGEMENT

- REMEDIAL ACTION PLANNING & IMPLEMENTATION
- CAD DRAFTING & DESIGN
- ENVIRONMENTAL ENGINEERING DESIGN
- FORENSIC CHEMISTRY
- HUMAN HEALTH & ECOLOGICAL RISK ASSESSMENT
- LITIGATION SUPPORT

360 703 6079

[www.hydroconllc.net](http://www.hydroconllc.net)

# COACHING STAFF

2016 O'DEA FOOTBALL



**MONTE KOHLER** – HEAD COACH

Coach Monte Kohler has been the Head Coach at O'Dea High School since 1985. In his 31 years coaching he has led his teams to three State Championships (1991, 1994, 1995), 23 League Championships, and 22 consecutive State Tournament appearances. Kohler's teams have qualified for the WIAA State football Championships 28 times; they have been State finalists 7 times. In his coaching career he has an overall record of 299-51, which ranks Kohler 3rd for number of wins amongst all football coaches in the state of Washington. Kohler's teams have also been named Academic State Champions three times (1993, 1995, 1999). Monte was inducted into O'Dea High School's Wall of Fame in 2000, the Washington State Football Coaches Association Hall of Fame in 2000, and the Pacific Northwest Hall of Fame in 2014. He has served as O'Dea's Athletic Director for 30 years and teaches A.P. History. Monte enjoys spending time with his wife, Jana, son John-Edward, daughter Cody-Marie, step-daughter Ashley, and step-son Race. They also have two grandchildren: John-Phillip and Parker-Marie.



**MIKE CROTTY** – DEFENSIVE COORDINATOR

Coach Mike Crotty played football at the University of Notre Dame where he was a 3 year letterman and 2 year starter as the Free Safety for Hall of Fame Head Coach, Ara Parseghian. After his senior year, Mike started in the Lion's Club American Bowl in Florida, an All-Star game for colleges across the nation. He has coached football for 39 years, 25 of which have been with O'Dea. He was the Defensive Coordinator for O'Dea's 1995 State Championship team; that season Crotty's defense had 11 shutouts in 13 games. Coach Crotty was also the Running Backs and Defensive Backs coach for the 1994 State Championship team. In 1999 Coach Crotty was named Washington State Assistant Coach of the Year. He currently serves as O'Dea's Defensive Coordinator. Mike and his wife, Coni, have three children and a grand-daughter, Mia.



**TIM GREENAN** – ASSISTANT COACH

Coach Tim Greenan is a proud O'Dea Alum (Class of 1980) and a former Irish football player. Greenan graduated from Gonzaga University and has since returned to O'Dea where he is entering his 26th season as a coach of the Defensive Line. Greenan has coached numerous O'Dea Lineman that went on to play at the collegiate level, and a few that went on to the NFL. Tim teaches History at O'Dea High School. He and his wife, Heidi, have two sons, Mac and Finn.



**BRANDON MAUL** – ASSISTANT COACH

Coach Brandon Maul played Wide Receiver and Defensive Back at Bellarmine Prep High School and started in the East-West All-Star Game in 2003. Maul went on to play Defensive Back at Santa Barbara City College and Central Washington University. He began the first 5 years of his coaching career at Bellarmine Prep and has now been with O'Dea High School for 4 years assisting with both Wide Receivers and Defensive Backs. Brandon currently serves as the P.E. teacher at O'Dea High School and is the Dean of the Waterford House. He and his wife, Chelsey, together have two kids: Boede (5) and Avery (3 in November).



**JOHN-MICHAEL DUANE** – ASSISTANT COACH

Coach John-Michael Duane is a proud alum of O'Dea High School (Class of 1992) where he played Wide Receiver on the 1991 State Championship Team. He has been coaching at O'Dea for 15 years working with Wide Receivers and Defensive Backs. When Duane isn't coaching he enjoys spending time with his wife, Katrina, and daughter, Kaili.





**ERASTO JACKSON** – ASSISTANT COACH

Coach Erasto “Red” Jackson is a proud alum of O’dea High School (Class of 1992) where he was captain of the 1st State Championship football team in 1991. He was named to the All Metro and All State as a Lineman, and went on to play at the Naval Academy. Coach Jackson is entering his 16th year with O’dea where he assists with the Offensive and Defensive Linemen. In his spare time Coach Red loves to cook. He has a takeout restaurant and catering business.



**KEVIN CHANDLER** – ASSISTANT COACH

Coach Kevin Chandler is a proud alum of O’Dea High School (Class of 1982) where he played Quarterback. He then played Quarterback for Montana State University. Coach Chandler has been a football coach for O’Dea High School since 1995. He is also a Math Teacher at Inglewood Middle School, and in 2014 was named Outstanding Educator. Kevin has been nominated for the Presidential Award for Excellence in Mathematics and Science Teaching (PAEMST). Chandler recently added a STEM endorsement by completing a STEM teacher externship with the Boeing and Expedia Corporations. He is an active member of the Blessed Mother Theresa of Calcutta Parish in Woodinville and of the Knight of Columbus at BMTOC.



**KURTH CONNELL** – ASSISTANT COACH

Coach Kurth Connell is a proud alum of O’Dea High School where he led the Irish to the State Championship in 1994. That year he was credited with 45 solo tackles and was named to the All Area, All State and All American teams. Kurth also holds an O’Dea record for Shotput and Discus and was the State Champion in Shotput in 1995. From there Kurth became a 3-year starter at right tackle for the University of Washington, and was then picked up by the New Orleans Saints. Coach Connell is entering his 11th year with O’Dea where he specializes in working with both the Offensive and Defensive Line. He is married to his lovely wife, Anna.



**CLARK HERNANDEZ** – ASSISTANT COACH

Coach Clark Hernandez played Offensive Lineman, Noseguard, Fullback and Linebacker for the Flushing High School Red Devils in New York, New York. He attended Arizona State University and the University of Washington. From there he began his 27 year coaching career. Clark has been with O’Dea for 9 years and assists in coaching the Offensive Line, Defensive Line, and Special Teams. Clark teaches (K-8th grade) Spanish at Saint Francis of Assisi. He is the founder of the LIONS Youth Football Club in Tacoma. Clark has been married to his wife, Molly, for 25 years. They have three children: Niko (O’Dea Class of 2012), Mike (O’Dea Class of 2014), and Kati.



**AL ROBERTS** – ASSISTANT COACH

Coach Al Roberts has been coaching football for 47 years. He began his coaching career at Mercer Island High School from 1969-1972 and then became the head coach at Garfield High School from 1973-1976. From 1977-1982 Roberts was the Running Backs coach on Don James’ staff at the University of Washington. He then joined the Los Angeles Express of the USFL in 1983 under Head Coach Hugh Campbell before following Campbell to the Houston Oilers in 1984. After one year stints on the college staffs at Purdue University and the University of Wyoming, Al joined Buddy Ryan with the Philadelphia Eagles in 1988. He served as the Eagles’ Special Teams coach for three seasons, and held the same position with the New York Jets from 1991 to 1993, the Arizona Cardinals from 1994-1995, and the Cincinnati Bengals from 1997-2002. Coach Roberts is entering his 6th year with O’Dea High School where he works with Special Teams, Running Backs and Outside Linebackers. Roberts and his wife, Arvella, have two sons, Kali and Kyle, and a daughter, Genesis.

# COACHING STAFF

2016 O'DEA FOOTBALL



MARK **LEDBETTER** – ASSISTANT COACH

Coach Mark Ledbetter joins O'Dea High School with a wealth of experience both playing and coaching football. Mark was a Linebacker at Washington State University before being drafted by the New Orleans Saints (NFL) in 1990. In 1991 he was drafted by the San Antonio Riders (WFLA) where he played both Outside Linebacker and Defensive End. Ledbetter was named second team All World League with 5 sacks, and was the franchise's all-time leader in sacks with 11. After the WFLA reorganized in 1992, Ledbetter played in the CFL for the Sacramento Gold Miners, Birmingham Barracudas, and the BC Lions. Mark has been coaching football for 8 years now and is entering his 4th season with O'Dea where he specializes in coaching Linebackers and Defense. When not coaching Mark enjoys spending time with his wife, Mardi, and his son, Dylan (O'Dea Class of 2015).



JOE **CRONIN** – ASSISTANT COACH

Coach Joe Cronin played Center and Defensive Lineman at Everett High School and started in the East-West All-Star Game in 1999. He began the first 8 years of his coaching career at Lake Stevens High School, serving the last 5 as Defensive Coordinator. In 2012 Cronin became the Head Coach of Cascade High School where he led a previously 0-25 team to the State Playoffs in just two years. During this time Cronin was named Everett Herald Football Coach of the Year for two consecutive years and was twice named Seattle Seahawks Coach of the Week. This is Cronin's 3rd year with O'Dea where he is also a Math teacher and the Dean of the Kilkeny House. He has been married to his wife, Jamie, for 3 years and together they have a 2 year old daughter, Kylie, and a 4 month old, Brady.



JAMES **BECK** – ASSISTANT COACH

Coach James Beck is a proud O'Dea Alum (Class of 2001) where he was a two-sport athlete. James played Running Back and Defensive Back for the Irish and in 2000 was named to the All-Metro League first team as a Running Back on offense and Cornerback on defense. He also ran track for O'Dea and to this day holds the school's record for the 4 x 400 relay. James went on to run track at Yale University and remains on their all-time list in the 4 X 100 relay. He also played Defensive Back at Yale University. This will be James' 3rd year coaching both football and track at O'Dea High School. He is also a School Counselor.



NICK **BAKER** – ASSISTANT COACH

Coach Nick Baker played quarterback at Lake Stevens High School from 2005-2009 and from there went on to play quarterback for Montana Tech University in Butte, Montana. Last year Coach Baker began his coaching career with the Everett Seagulls where he helped on the offensive side of the ball. This year Nick joins O'Dea High School as a quarterback coach. He is also teaching Math.



PAXTON **PAYNTER** – HEAD STRENGTH & CONDITIONING COACH

Coach Paxton Paynter played quarterback at Lake Stevens High School and Rocky Mountain College in Billings, Montana. He then began his coaching career at Cascade High School in 2012 where he coached quarterbacks and served as the Head Strength & Conditioning Coach. In 2015 Paynter was an intern for the University of Washington football team, along with the Head Strength & Conditioning Coach at Lake Stevens High School. This past summer Coach Paynter was hired as O'Dea's first full-time Strength & Conditioning Coach where he will be responsible for training all student-athletes.



# COACHING STAFF

2016 O'DEA FOOTBALL



**BEN SZOCIK** – ATHLETIC TRAINER

Athletic Trainer Ben Szocik started working at O'Dea in 2013. Ben has been a certified athletic trainer for 5 years, and holds a certified strength and conditioning coach credential through the National Strength and Conditioning Association. Besides working with high school athletic programs, Ben has covered Division I Athletics, marathons, USA Rugby matches, and numerous tournaments for a variety of sports and age groups. In addition to athletic training responsibilities, Ben teaches Introduction to Sports Medicine at O'Dea. In his spare time he enjoys being outdoors, eating, reading, traveling, and spending time with friends and family.



**JIM WALTERS** – ATHLETIC TRAINER

Coach Jim Walters graduated from Eastern Washington University where he earned a varsity letter in track and field. He was an assistant coach for O'Dea's 2003 & 2004 state championship track teams. Mr. Walters has been teaching and coaching both football and track in the Seattle Archdiocese for over 35 years. During this time, he has taught Sports Medicine and English, served as Dean of Students and Athletic Director, and currently teaches English and Anatomy & Physiology at O'Dea. He is a long-time member of the Washington State Coaches Association, a member of the National Athletic Training Association, a professional member of the American College of Sports Medicine, and a Nationally Certified Instructor Trainer for Medic First Aid. Jim and his wife Susan have three daughters: Kara, Jie, and Mei.



## COACHING STAFF

**BACK ROW:** JOHN-MICHAEL DUANE, ERASTO JACKSON, KEVIN CHANDLER, MARK LEDBETTER

**MIDDLE ROW:** CLARK HERNANDEZ, JOE CRONIN, TIM GREENAN, NICK BAKER, BEN SCOZIK

**BOTTOM ROW:** MIKE CROTTY, JIM WALTERS, BRANDON MAUL, MONTE KOHLER, JAMES BECK, PAXTON PAYNTER, AL ROBERTS

# CROSS COUNTRY

2016 O'DEA FIGHTING IRISH



## 2016 SEASON PREVIEW

The 2016 Irish Cross Country squad are led by two of the area's top up and coming Junior runners in Isaac Mohn and Andrew Hogan. Having both competed as all-league athletes as Sophomores, Mohn and Hogan look to make a strong impression at the state level this season. Team captains Chris Walker (senior), Brendan Sailer (senior) and Mohn (junior) have led the team's summer training efforts and bring solid leadership to a team with high expectations in 2016. The Irish start their competitive season September 10th and race through the State Championships Saturday November 5th. Go Irish!

### *Coach Bazzi*



DATE	OPPONENT	LOCATION	TIME
SEPT. 10	BELLARMINE INVITATIONAL	BELLARMINE	10:25 AM
SEPT. 16	LAKESIDE/BLANCHET/BAINBRIDGE	LOWER WOODLAND	3:40 PM
SEPT. 21	BALLARD/BAINBRIDGE/ROOSEVELT	LINCOLN PARK	3:40 PM
OCT. 1	CURTIS INVITATIONAL	MULTIPLE	9:30 AM
OCT. 5	FRANKLIN/N. HALE/W. SEATTLE	MAGNUSON	3:40 PM
OCT. 13	BLANCHET/EASTSIDE/BAINBRIDGE/LAKESIDE/S. PREP	LOWER WOODLAND	3:40 PM
OCT. 20	METRO CHAMPIONSHIP	LOWER WOODLAND	3:00 PM
OCT. 27	SEA-KING DISTRICT 2 CHAMPIONSHIP MEET	LOWER WOODLAND	2:30 PM
NOV. 5	WIAA STATE CHAMPIONSHIP MEET	SUN WILLOWS GOLF COURSE-PASCO	TBA





## 2016 SEASON PREVIEW

The 2016-2017 O'Dea golf season looks very promising. Four solid players are returning and the strongest Freshmen class in years will be vying for spots at tryouts in late August. The golf program is in line to once again be competitive at the Metro and District tournaments, and will look to win another State Golf Title for the Fighting Irish!

*Coach Vaughan*

DATE	OPPONENT	LOCATION	TIME
SEPT. 8	INGRAHAM	JACKSON GOLF COURSE	3:30 PM
SEPT. 9	BALLARD	JEFFERSON GOLF COURSE	3:30 PM
SEPT. 13	ROOSEVELT	JACKSON GOLF COURSE	3:30 PM
SEPT. 20	BAINBRIDGE	WEST SEATTLE GOLF CLUB	3:30 PM
SEPT. 28	NATHAN HALE	JACKSON GOLF COURSE	3:30 PM
SEPT. 30	EASTSIDE	JEFFERSON GOLF COURSE	3:30 PM
OCT. 3	BLANCHET	JEFFERSON GOLF COURSE	3:30 PM
OCT. 6	LAKESIDE HS	WEST SEATTLE GOLF CLUB	3:30 PM
OCT. 10	FRANKLIN	JEFFERSON GOLF COURSE	3:30 PM
OCT. 12	WEST SEATTLE	WEST SEATTLE GOLF CLUB	3:30 PM
OCT. 13	SEATTLE PREP	JACKSON GOLF COURSE	3:30 PM
OCT. 18	ALL METRO	JACKSON GOLF COURSE	10:00 AM
OCT. 20	ALL METRO FINALS	JEFFERSON GOLF COURSE	10:00 AM
OCT. 25	DISTRICT GOLF	RIVERBEND GOLF COURSE	TBA
MAY 23 & 24	STATE GOLF TOURNAMENT	TBD	TBA



# THE OFFENSE

**QUARTERBACK (QB):** The player who receives the ball from the center at the start of each play before either handing it to the running back, throwing it to a receiver, or running with it himself. The quarterback is usually the player in charge of running the offense on the field. He is also the guy that usually informs the offense of the play while in the huddle.

**CENTER (C):** The offensive lineman who hikes (or snaps) the ball to the quarterback at the start of each play. The center lines up in the middle of the offensive line, between the offensive guards.

**GUARD (LG/RG):** A member of the offensive line. There are two guards on every play, and they line up on either side of the offensive center.

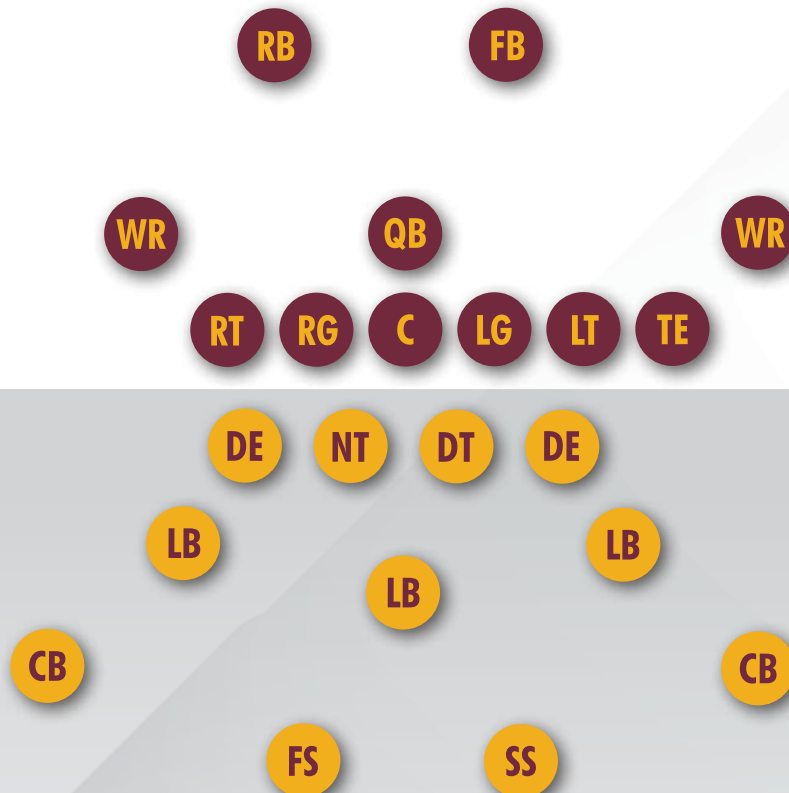
**OFFENSIVE TACKLE (LT/RT):** A member of the offensive line. There are two tackles on every play, and they line up on the outside of the offensive guards.

**TIGHT END (TE):** An offensive player who serves as a receiver and also a blocker. The tight end lines up beside the offensive tackle either to the right or to the left of the quarterback.

**WIDE RECEIVER (WR):** An offensive player who lines up on or near the line of scrimmage, but split to the outside. His primary job is to catch passes from the quarterback.

**FULLBACK (FB):** An offensive player who lines up in the offensive backfield and generally is responsible for run-blocking for the halfback and pass-blocking for the quarterback. Fullbacks are usually bigger than halfbacks, and also serve as short-yardage runners.

**RUNNING BACK (RB):** An offensive player who lines up in the backfield and generally is responsible for carrying the ball on run plays. A running back's primary role is to run with the football, he is also used as a receiver at times.



# THE DEFENSE

**CORNERBACK (CB):** A defensive back who generally lines up on the outside of the formation and is usually assigned to cover a wide receiver.

**SAFETY (SS/FS):** A defensive back who lines up in the secondary between, but generally deeper than the cornerbacks. His primary duties include helping the cornerbacks in pass coverage. There are actually two safety positions; the free safety and strong safety.

**DEFENSIVE END (DE):** A defensive player who lines up at the end of the defensive line. The job of the defensive end is to contain the running back on running plays to the outside, and rush the quarterback on passing plays.

**DEFENSIVE TACKLE (DT):** A defensive player who lines up on the interior of the defensive line. The duties of a defensive tackle include stopping the running back on running plays, getting pressure up the middle on passing plays, and occupying blockers so the linebackers can roam free.

**NOSE TACKLE (NT):** A defensive tackle who lines up directly across from the center. Also known as the nose guard, the primary responsibilities of the nose tackle are to stop the run and occupy the offensive lineman to keep them from blocking the linebackers.

**LINEBACKER (LB):** A defensive player who lines up behind the defensive linemen and in front of the defensive backfield. The linebackers are a team's second line of defense. Each team has two outside linebackers. In a 4-3 defense, teams have one inside linebacker, which is usually referred to as a middle linebacker. In a 3-4 defense teams have two inside linebackers.



**On you Irish, Fight you Irish**

**Bring that victory home!**

**We're behind you all the way**

**Because we're true to O-D-E-A!**

**On you Irish, Fight you Irish**

**Touchdowns Raise the Score!**

**So on you Irish**

**Fight! Fight! Fight!**

**And win some more!**

Contact us  
today for a  
**FREE QUOTE!**



**C. DON FILER AGENCY, INC.**  
*INSURANCE BROKERS*

**We've Been the Northwest's Most  
Trusted Brokers for Over 65 Years!**

**Representing**



**PEMCO**  
*Insurance*

**& other fine  
companies**

**206-545-4800**

**[www.filerinsurance.com](http://www.filerinsurance.com)**



**4201 Roosevelt Way NE | Seattle WA 98105**







FIRST HILL  
DENTAL  
CENTER



You. Your Health.  
Your Confidence.

## OUR SERVICES

Preventative · Fillings · Implants · Invisalign  
Crowns/Onlays/Veneers · Oral Surgery · Dentures  
Emergency · Endodontics · Periodontics · Tissue Grafts

901 Boren Ave Suite 1500  
Seattle, WA 98104

**206-323-3830**

[www.firsthilldentalcenter.com](http://www.firsthilldentalcenter.com)





Patterson Buchanan  
Fobes & Leitch INC. P.S.



## Worthy Causes.

Since the Firm's formation in 2007, Patterson Buchanan Fobes & Leitch, Inc., P.S. has remained proudly committed to providing the highest and most ethical level of training and advocacy to communities of faith and schools throughout the United States.

Patterson Buchanan is just as honored to offer its support to O'Dea High School and its tradition of academic excellence, diversity, and faith formation.

---

SEATTLE OFFICE  
2112 THIRD AVENUE, SUITE 500  
SEATTLE, WASHINGTON 98121  
PHONE (206) 462-6700 • FAX (206) 462-6701

PORTLAND OFFICE  
1001 SW FIFTH AVENUE, 11TH FLOOR  
PORTLAND, OREGON 97204  
PHONE (503) 200-5400 • FAX (503) 200-5401

---

TOLL FREE (800) 722-3815 • [WWW.PATTERSONBUCHANAN.COM](http://WWW.PATTERSONBUCHANAN.COM)



O'DEAS  
**WINNING TEAM**  
 in  
**LUXURY  
 REAL ESTATE**  
*Go Fighting Irish!*



NMLS# 246676

**EVAN WYMAN**  
 MANAGING BROKER  
 206.320.1400

**JAY CROWELL**  
 CERTIFIED MORTGAGE PLANNER\*  
 206.795.9268

EVAN**WYMAN**.COM

TEAM**CROWELL**.COM



\* NOT A COMMITMENT TO LEND. BORROWER MUST MEET QUALIFICATION CRITERIA. WA CL-247244 (NMLS 247244) LICENSED BY THE DEPARTMENT OF BUSINESS OVERSIGHT UNDER THE CA RESIDENTIAL MORTGAGE LENDING ACT, CARMLA 813H203, CAFLLL 6031184. LICENSED UNDER THE OREGON CONSUMER FINANCE ACT. OR ML-4252-29.